

F a l l F a s h i o n A d v i c e

By Cynthia Burgos
Copy Editor

The weather has not been cooperative to go all out on style, but it will not hold back those dedicated to fashion from looking their best. As always there are different ways that people can display their certain style. An important attribute having to do with fashion are the facial features and the way that each person decides to present it daily.

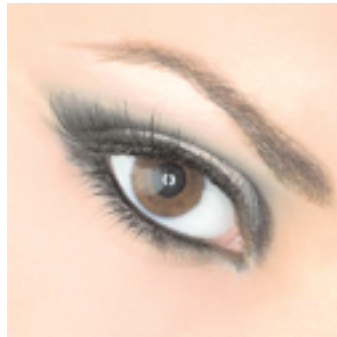
The most prominent feature of the face is the eyes. Of course there are all different types of eyes that coordinate with each different person. The most common eye color is typically brown. This eye color tends to favor copper, bronze, soft pink, beige, brown, and light green hues of eye shadow. Green and hazel eyes match well with brown,

apricot, purple, plum, deep khaki or forest green eye shadow. Blue eyes look well with gray, violet, deep blue, and taupe. Colors that complement all eyes are navy or charcoal. Silver is a glittery color that gives an edgy look to any eye.

Eyeliner is essential when doing eye makeup. There are different ways to go about it. It helps to smudge some loose, sheer powder where the eyeliner will be applied. This helps the eyeliner stick better. It is also better to curl eyelashes before applying eyeliner or else the line could smudge. Liquid eyeliners are good to make a clean straight line, and pencils create a more subtle line. It is always important to think about quantity. There is such a thing as overdoing it. Thick lines of eyeliner are not appealing and do not complement the eyes. With mascara, the number one rule is to avoid

dried globs and clumping strands.

It is important to have a good foundation that will display a smoothness of one's skin. A nat-



ural color that blends the color down to the neck is better than having the appearance of a mask. A color must not only match skin tone but also the skin type. Tinted moisturizers cover tiny flaws that may appear. Liquid foundations are beneficial because they offer full, medium, or sheer coverage. Cream and powder foundations offer a

heavier coverage that one must be careful to not overdo.

Following are a few dos and don'ts of makeup wear that can either make or break you. Always be sure to moisturize the skin before applying makeup. This will improve the health of your skin and prevent the look of flaky, dry skin. When applying makeup, be sure to do it in a well lighted area. Do not use makeup that is incompatible with your complexion. For example, wearing oil based makeup on oily skin will not make your skin any less oily. Do make sure to check your makeup products for any expiration dates, because bacteria could have formed on it causing skin irritations or an infection.

Just as there are trends for clothing, there are several for makeup also. To begin with, dramatic eyes fit right in with the trends of this season. Intense

lips are also a trend of this fall. When applying makeup, it is either or but not both. Intense lip color with bold eyes might just be a little overdramatic for school or a date to the movies. This season also tends to bring darker, rich earth tones, rather than vivid, bright, peppy colors. Just because there are more subtle colors does not mean that everything has to be subtle. Earthy tones are appealing, but again, make sure that the palette of your overall makeup matches.

Always take a final good look in the mirror before leaving. No matter what style you choose, it is fun to try new things and experiment. You might find something new that depicts your personality a little better than you thought it could. If it is not what you expected, you can always take it off with some makeup remover. At this age it is about identifying with yourself.

S O U T H E A S T S I D I N G

- Vinyl Siding
- Hardie Board Siding
- Vinyl Replacement Windows
- Metal Roofing
- Asphalt Shingle Roofing
- Gutters
- Pressure Washing

192 Redland Road
Franklin, Ga. 30217

Clint Miller: 404-717-0302
Owner

